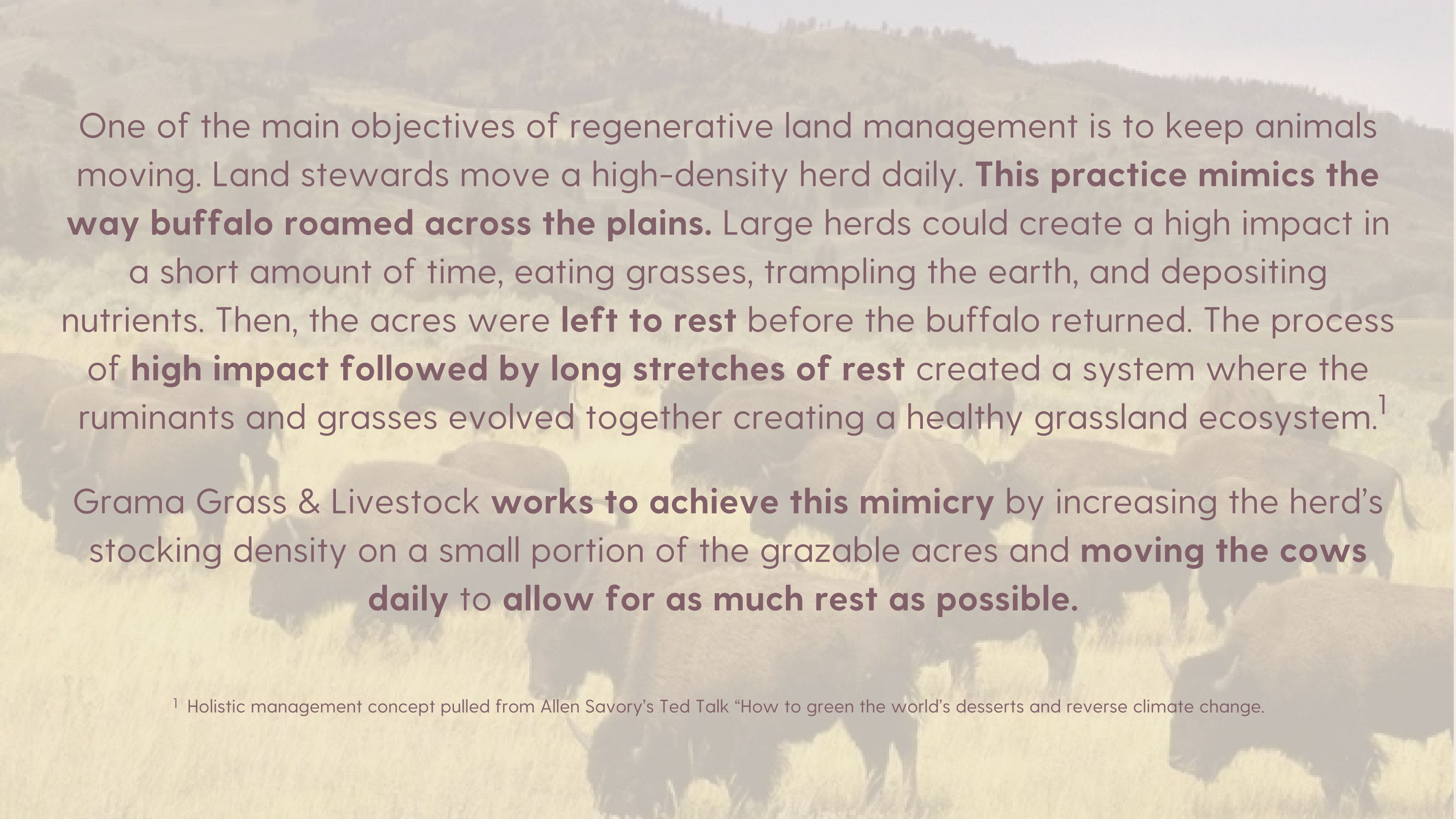


Grama Grass & Livestock

Agriculture as part of our ecosystem

Founder & CEO Andy Breiter



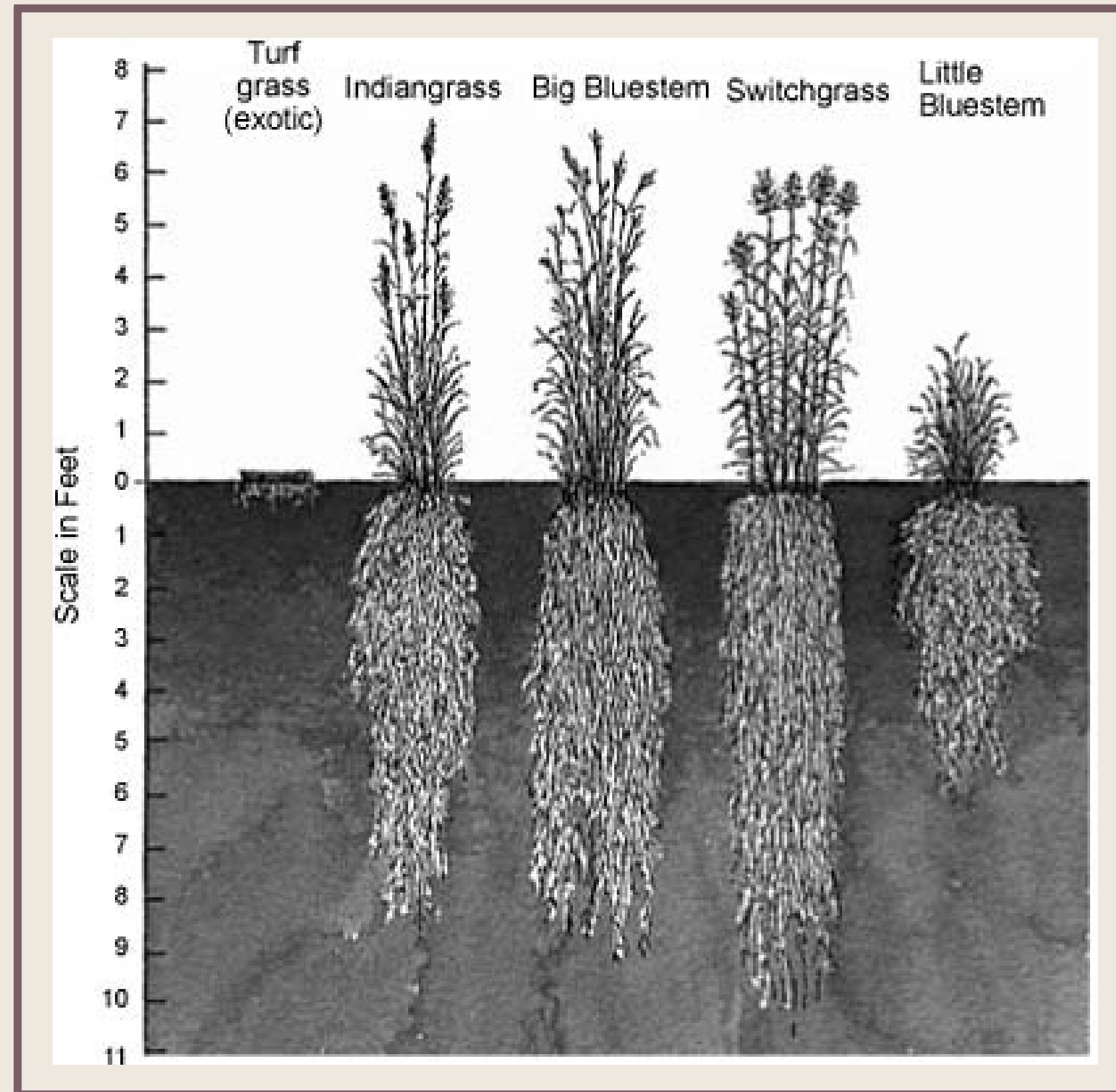
A herd of cows is grazing in a field. In the background, there are rolling hills under a clear sky. The text is overlaid on the image.

One of the main objectives of regenerative land management is to keep animals moving. Land stewards move a high-density herd daily. **This practice mimics the way buffalo roamed across the plains.** Large herds could create a high impact in a short amount of time, eating grasses, trampling the earth, and depositing nutrients. Then, the acres were **left to rest** before the buffalo returned. The process of **high impact followed by long stretches of rest** created a system where the ruminants and grasses evolved together creating a healthy grassland ecosystem.¹

Grama Grass & Livestock **works to achieve this mimicry** by increasing the herd's stocking density on a small portion of the grazable acres and **moving the cows daily to allow for as much rest as possible.**

¹ Holistic management concept pulled from Allen Savory's Ted Talk "How to green the world's deserts and reverse climate change."

Overgrazing vs Undergrazing



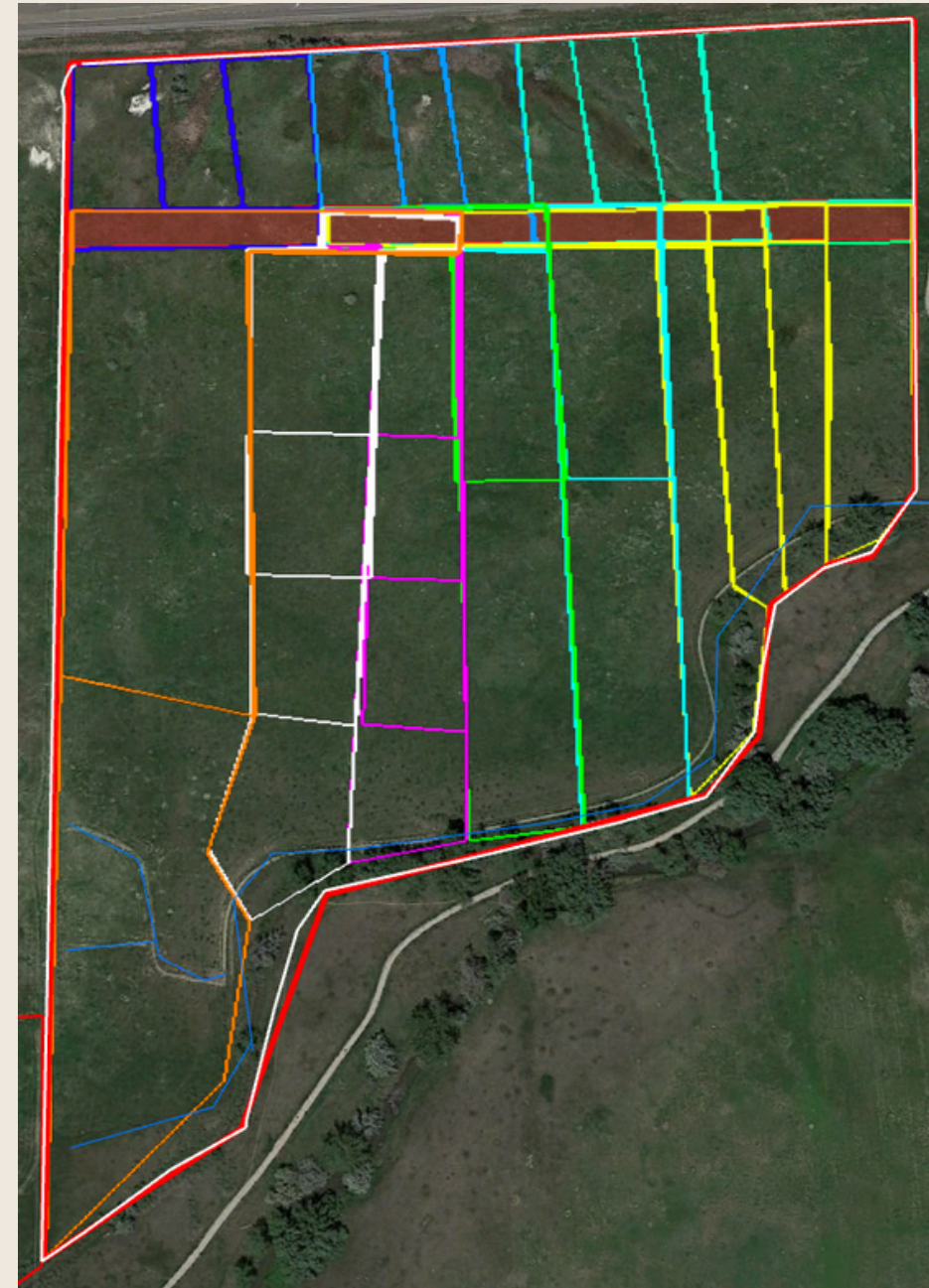
How do we work to achieve this mimicry?



Use of flexible, temporary fencing



Establish partnerships to gain access to land



Create individualized property grazing plans



Get creative!

More Than Production



Farmers/producers are valued by how much they produce

Grazing lease rates are based on available forage, encouraging producers to take as much forage as possible

Practices are extractive

Pay outs only come from what's taken from the field

Farmer/producer is valued for more than their ability to produce high yields

Producers are incentivized to care more for the ecosystem as a whole

Grazing leases can turn into contracts which value the producers more

Grazing livestock on the land is considered providing a service

Produce Food

Yield-driven Approach

Health-driven Approach

Shifting the Mindset

Using chemical solutions to prevent vines from climbing up solar panels and impacting sun exposure



Contracting a sheep grazer to run sheep under solar panels to prevent vines from growing tall enough to impact the panels

Lethally controlling prairie dogs to remove them from a property and encourage plant growth



Working with a cattle producer that will rotationally graze animals, reintroducing the symbiotic relationship of ruminants to grasslands and restoring balance with the wildlife population

Choosing to hire or contract a mower to reduce the fuel load as a fire mitigation approach



Using livestock that will consume the grasses in a heterogeneic manner and support soil health

Livestock are just used on the land to consume grass, drink water, and produce meat

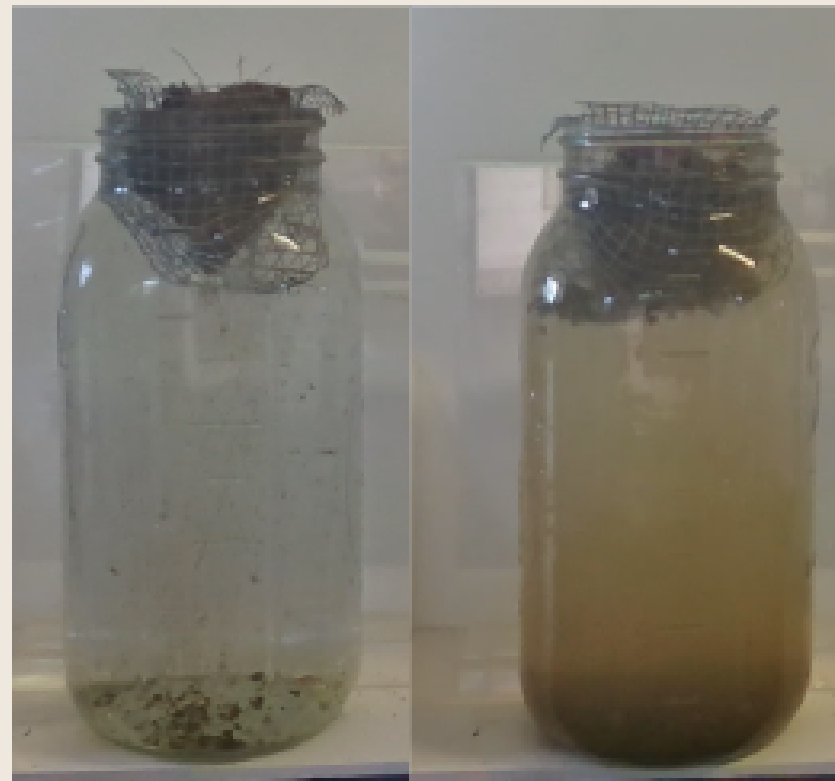


When used appropriately livestock can be an integral tool for ecosystem health and longevity

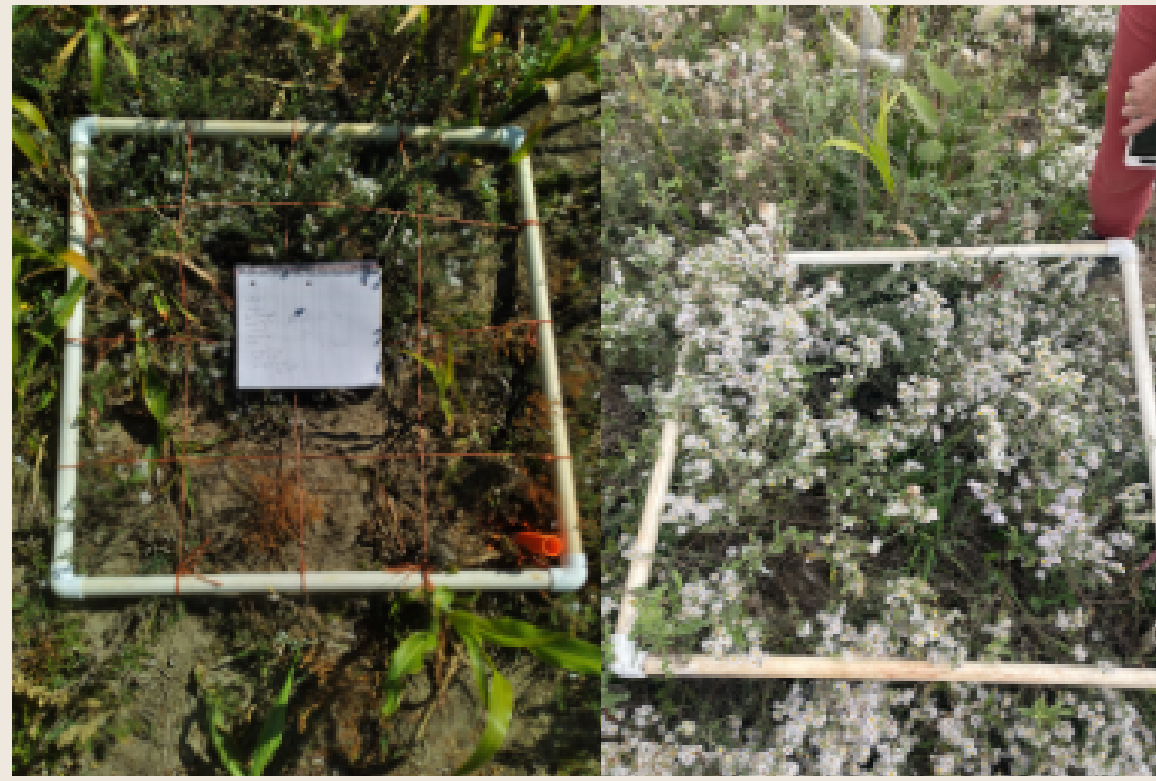
The importance of tracking our impact

On each of the properties we graze, we have some level of monitoring program. This ranges from a comprehensive grant project through the St. Vrain Left Hand Water Conservancy District to documenting characteristics in the field by taking photos with our phones.

We believe tracking the impact of our grazes gives us the opportunity to learn from our management and communicate with our land partners.



Side by side slake tests of two different properties



September 2021

September 2022



Hoof impact after a large rain event



Capturing plant height, density and diversity

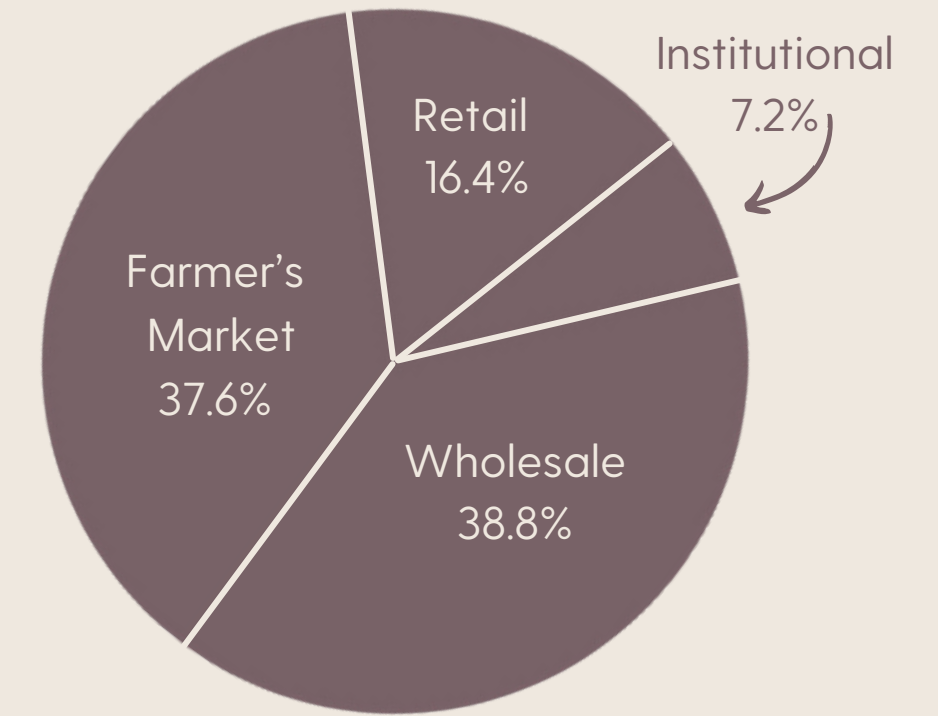
From pasture to plate



Through **land partnerships** and **adaptive stockmanship**, Grama Grass has the opportunity to create **regenerative meat**.

Our products are distributed through multiple channels with the objective of getting as much nourishing food into the hands of as many people as possible.

In 2024, we distributed enough beef to feed...



Beef Up Our Fresh Foods Market!

Community



Thank you

